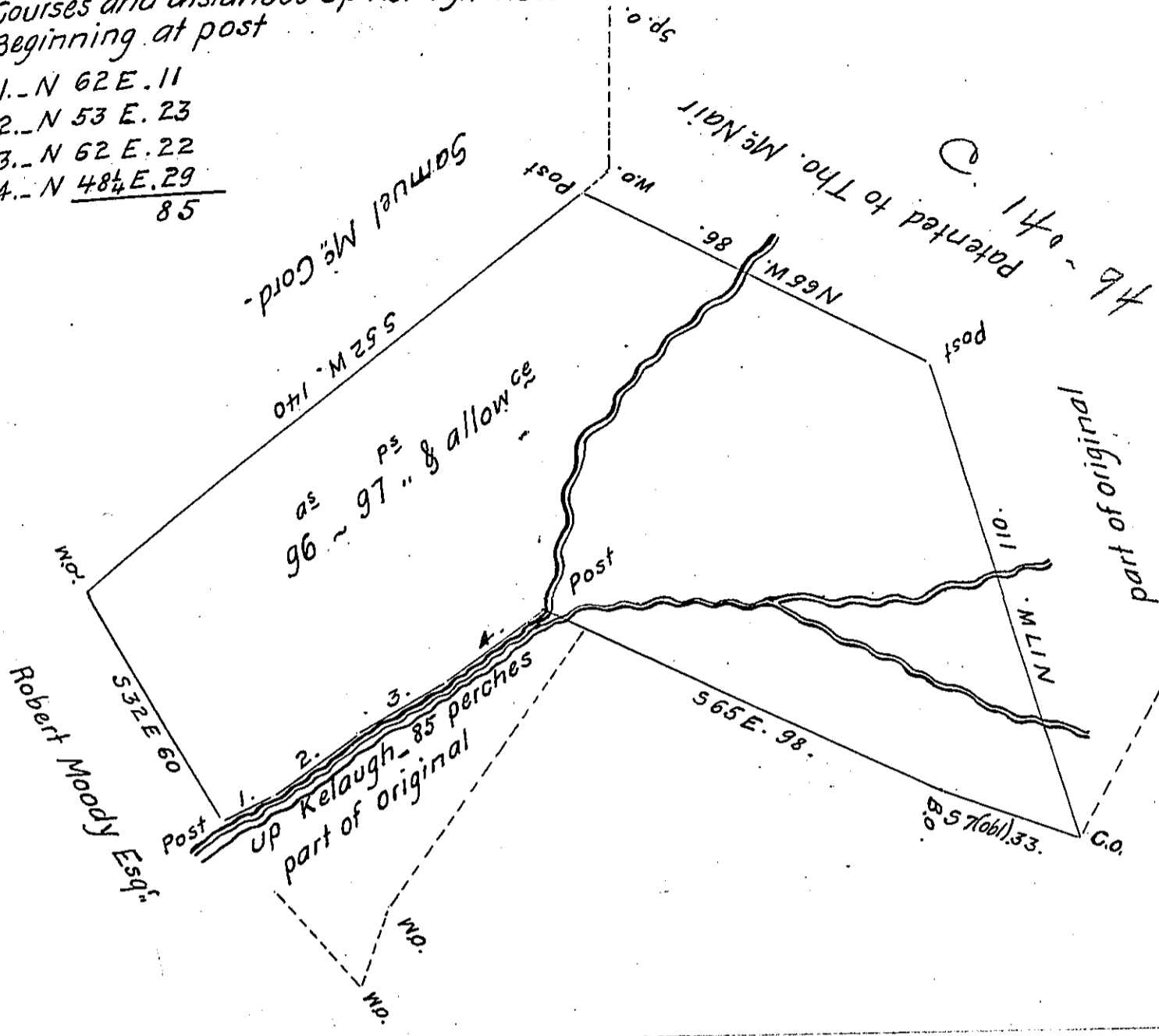


FORM No. 1.
Courses and distances up Kelaugh Run
Beginning at post

- 1. - N 62 E. 11
 - 2. - N 53 E. 23
 - 3. - N 62 E. 22
 - 4. - N 48 1/2 E. 29
- 85



Surveyed 22^d April 1829. for John Henshaw Situate in West Hanover township Dauphin County Containing Ninety Six acres Ninety Seven perches and allowance of Six per Cent part of a larger tract granted to William M^o Glenigan by Warrant of 25 October 1750.

To Gabriel Hiester Esq^r. }
 Surveyor Gen^l. }

John Davies D.S.

IN TESTIMONY that the above is a copy of the original remaining on file in the Department of Internal Affairs of Pennsylvania, made conformably to an Act of Assembly approved the 16th day of February, 1833, I have hereunto set my Hand and caused the Seal of said Department to be affixed at Harrisburg, this nineteenth day of February 1906

George R. Brown
 Secretary of Internal Affairs.